

JEFFRIES AND FARIS  
ASSOCIATES  
ARCHITECTS + PLANNERS

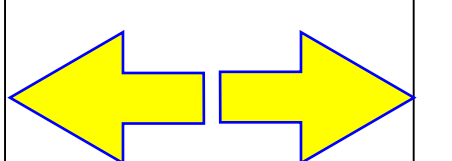
SEA TOWERS, SUITE 201  
2002 EASTWOOD ROAD  
WILMINGTON, N.C. 28403

TEL: 910.256.6633  
FAX: 910.256.9088

SCIENCE BUILDING  
UNIVERSITY OF NORTH CAROLINA AT WILMINGTON  
CODE 49388 ITEM 301 ID#6089280301A

SHEET TITLE:

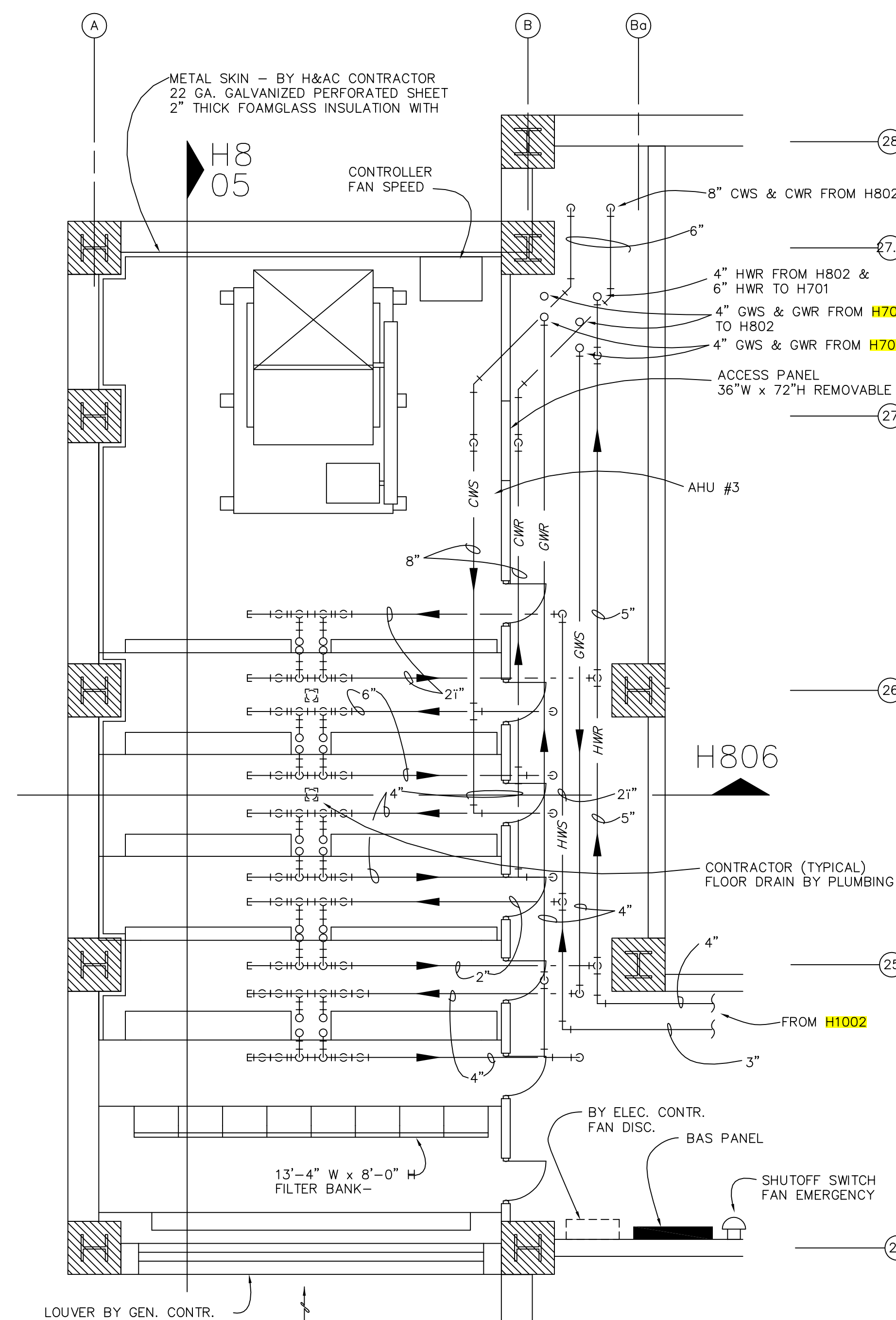
ENLARGED PLANS  
DETAILS



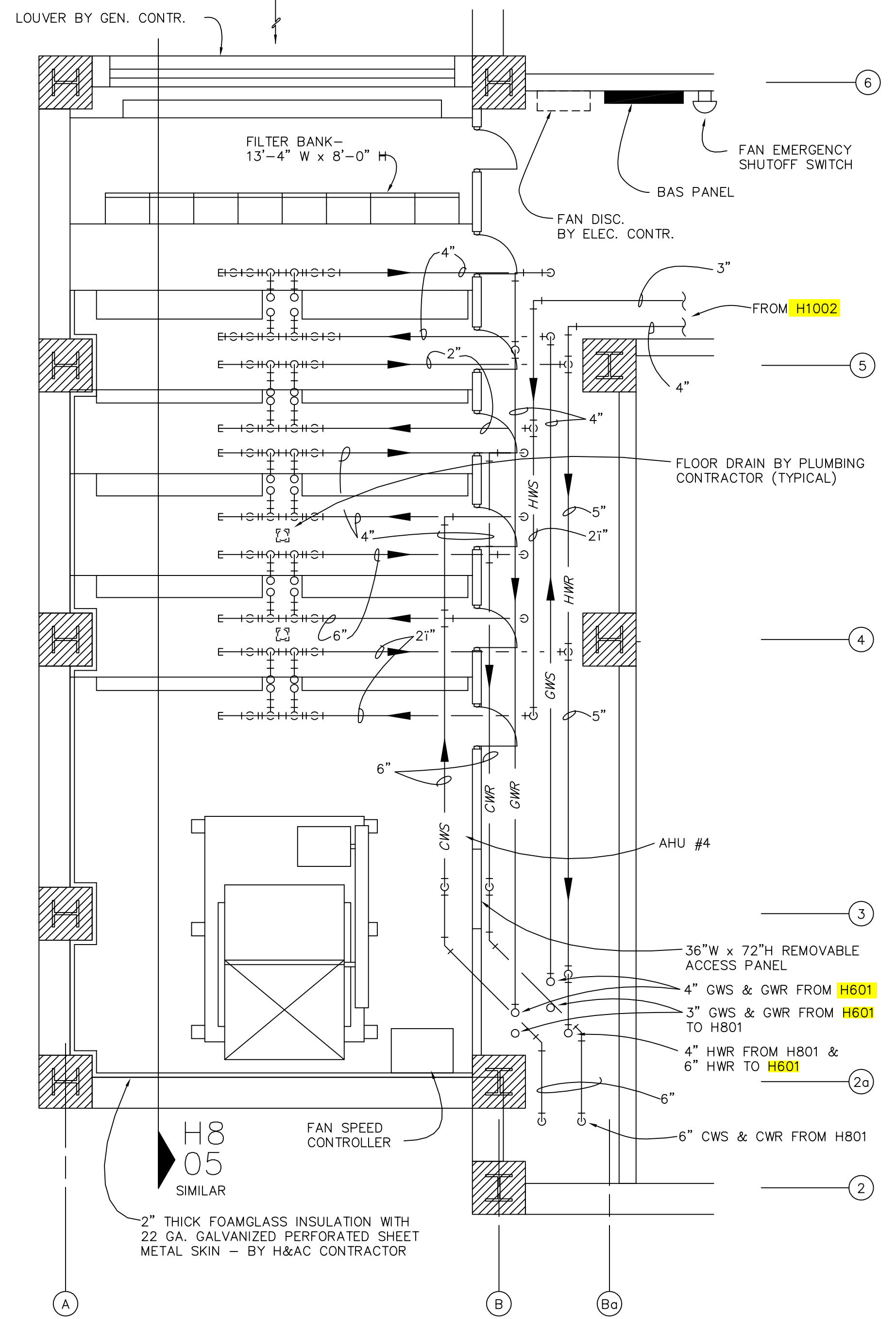
SHEET NO.:

H8

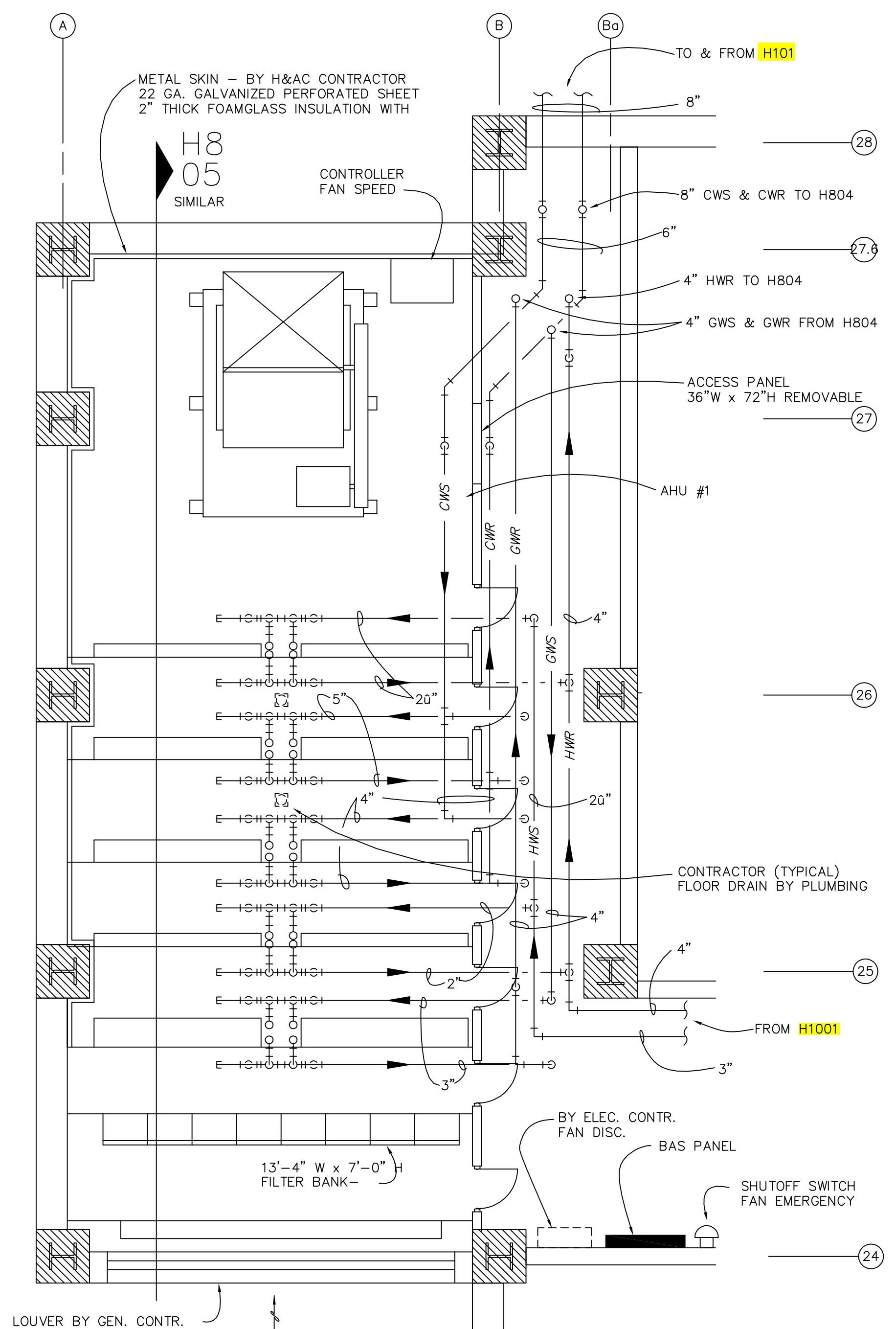
OF 13



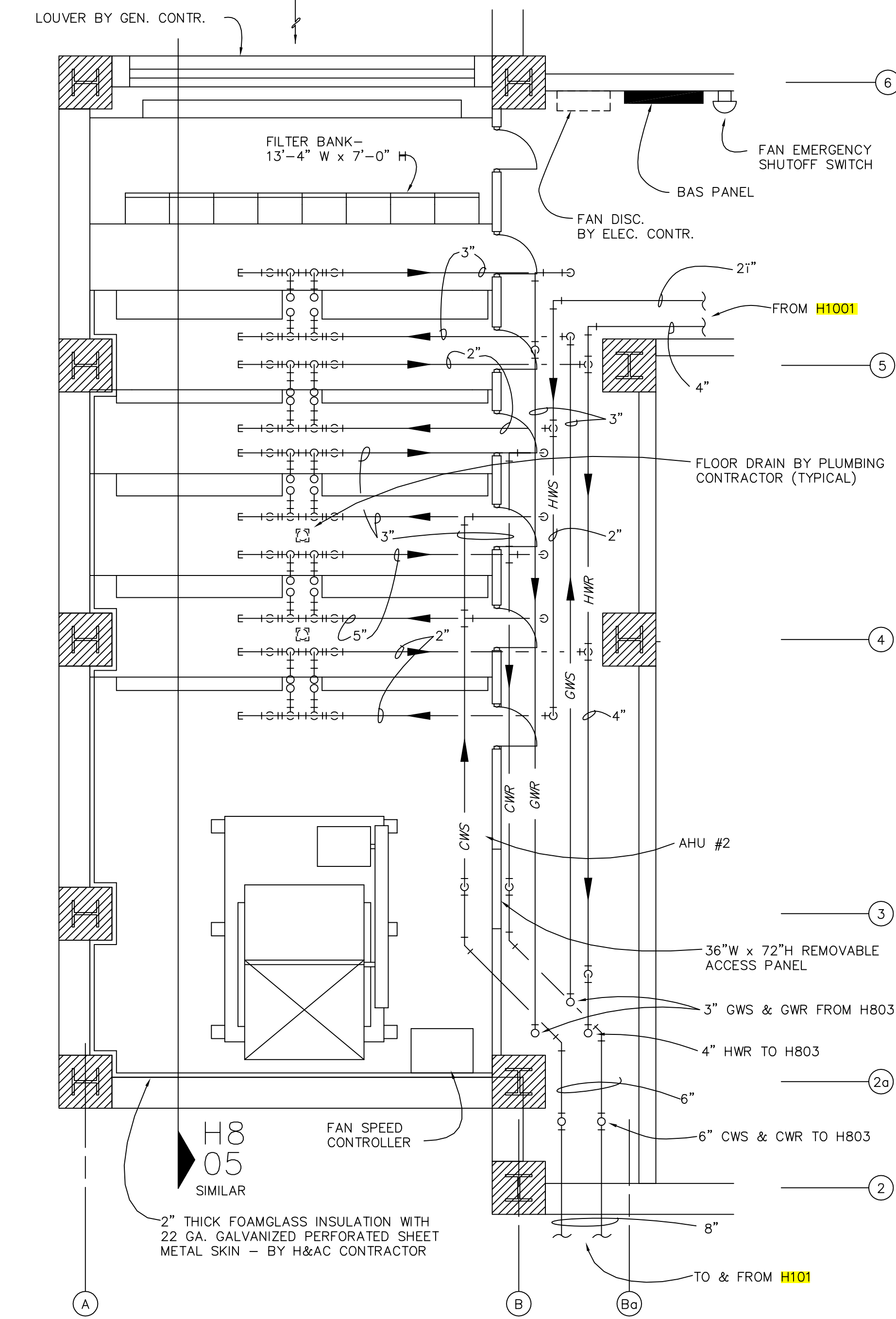
H8 04 MECHANICAL ROOM - 2275  
ENLARGED PLAN  
SCALE: 1/4" = 1'-0"



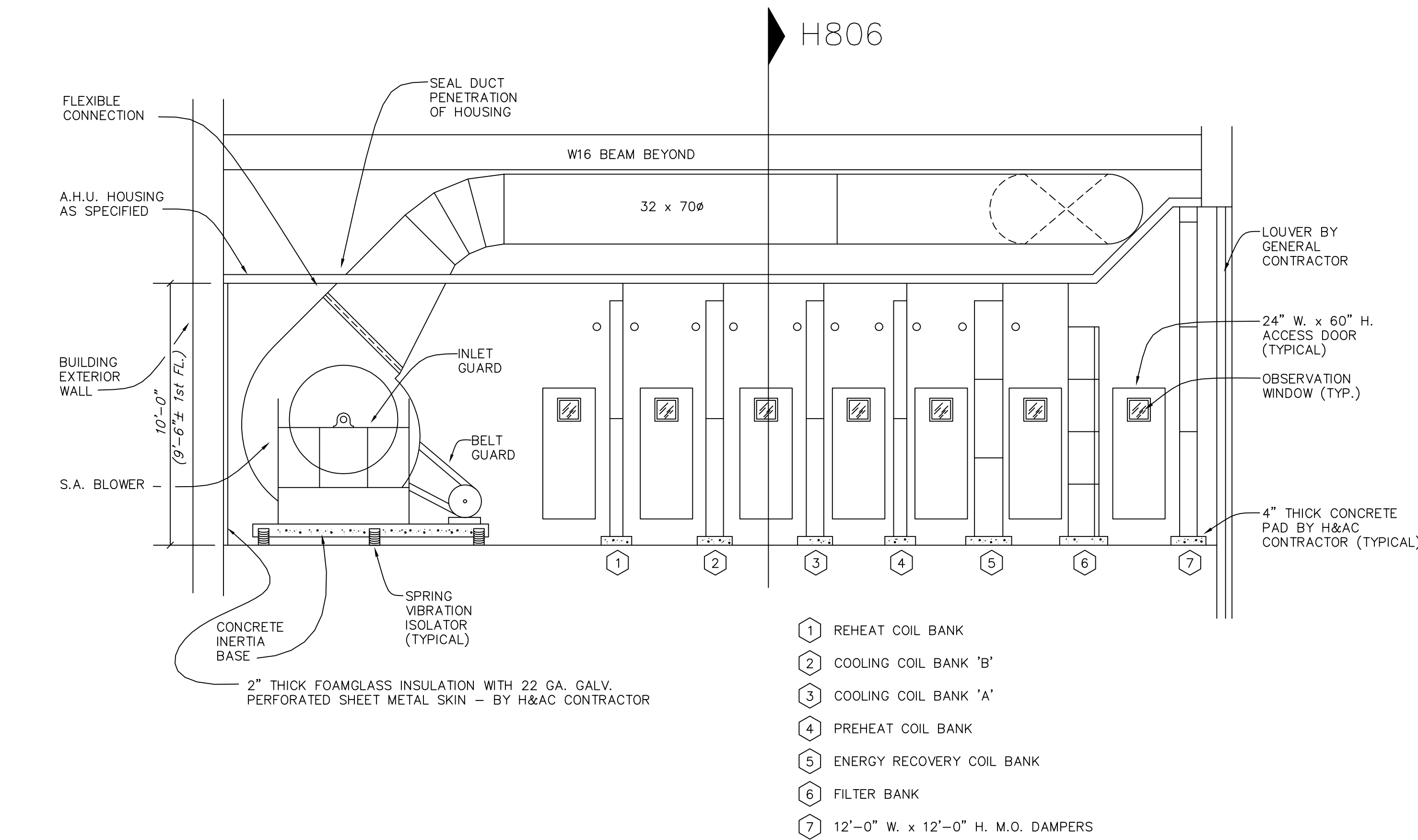
H8 03 MECHANICAL ROOM - 2038  
ENLARGED PLAN  
SCALE: 1/4" = 1'-0"



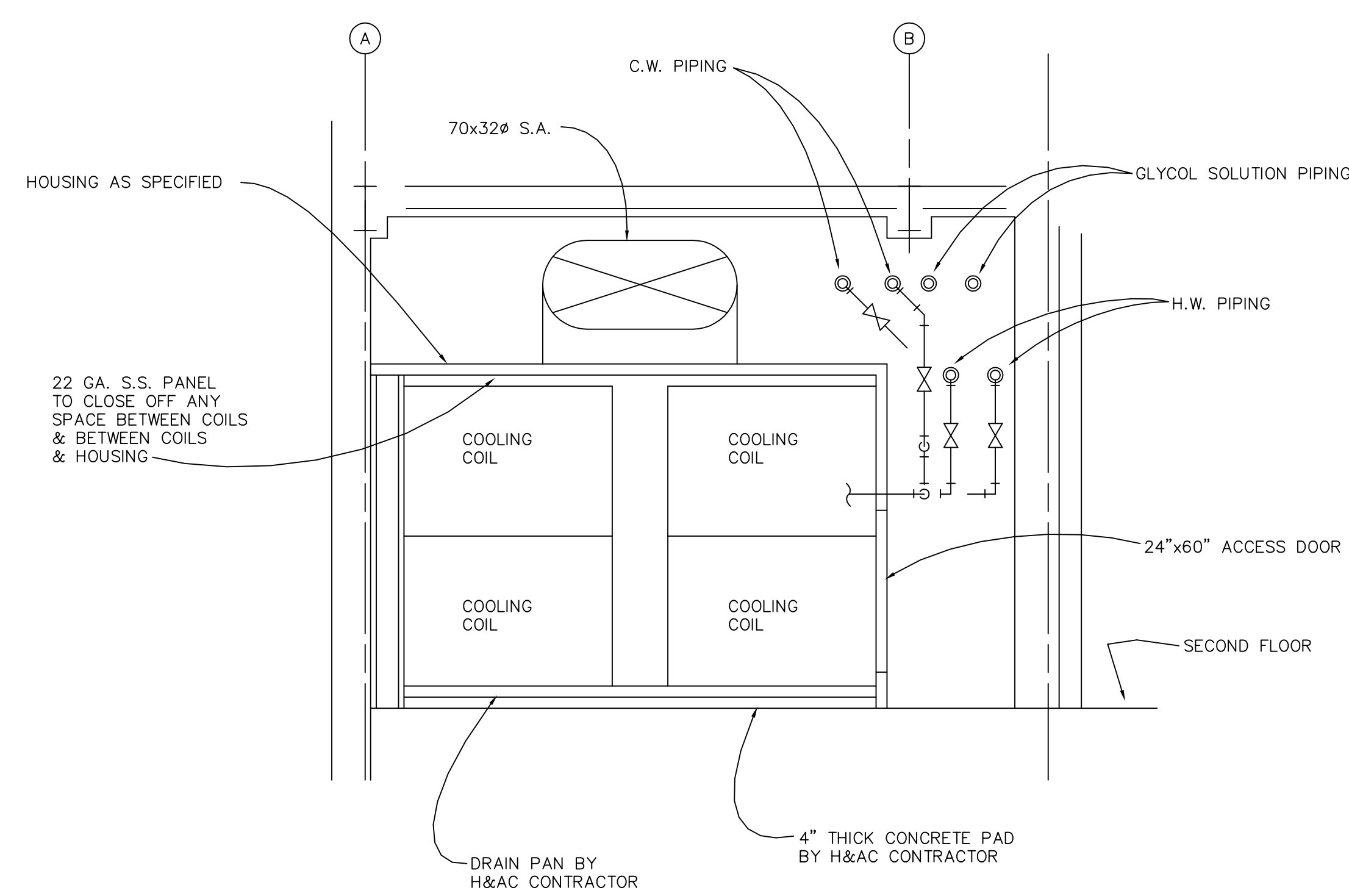
H8 02 MECHANICAL ROOM - 1268  
ENLARGED PLAN  
SCALE: 1/4" = 1'-0"



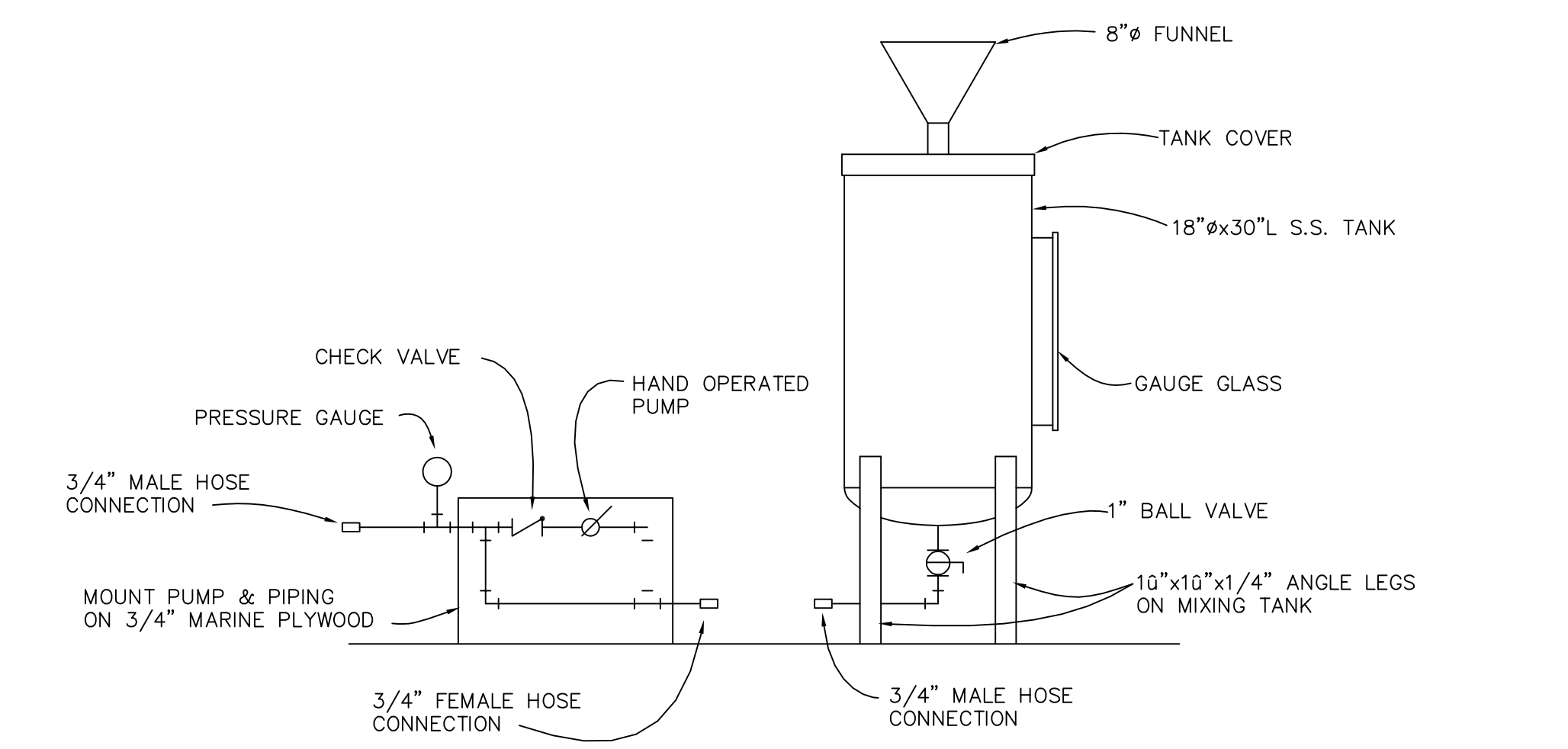
H8 01 MECHANICAL ROOM - 1037  
ENLARGED PLAN  
SCALE: 1/4" = 1'-0"



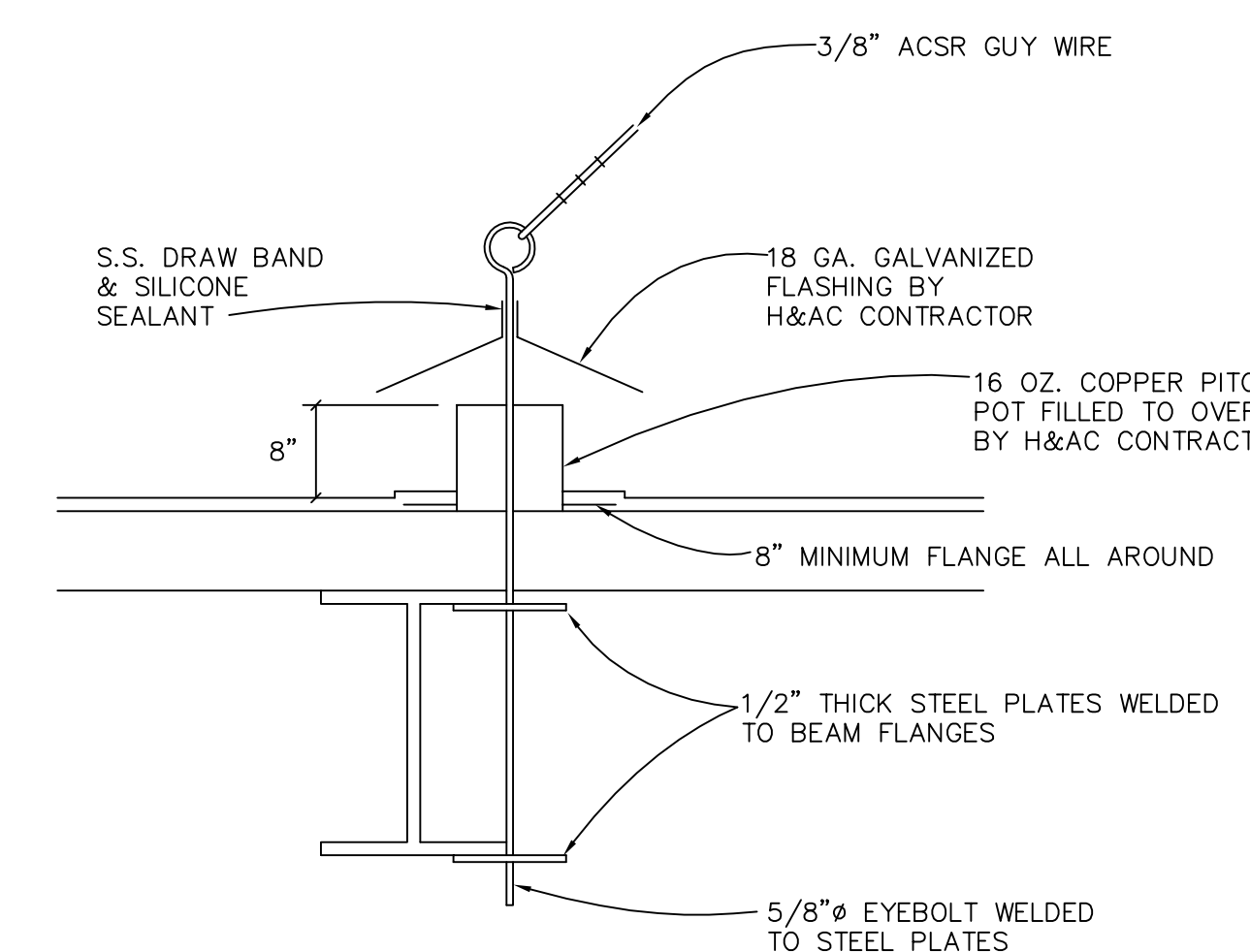
H8 05 MECHANICAL ROOM - A.H.U. #3  
SECTION  
SCALE: 1/4" = 1'-0"



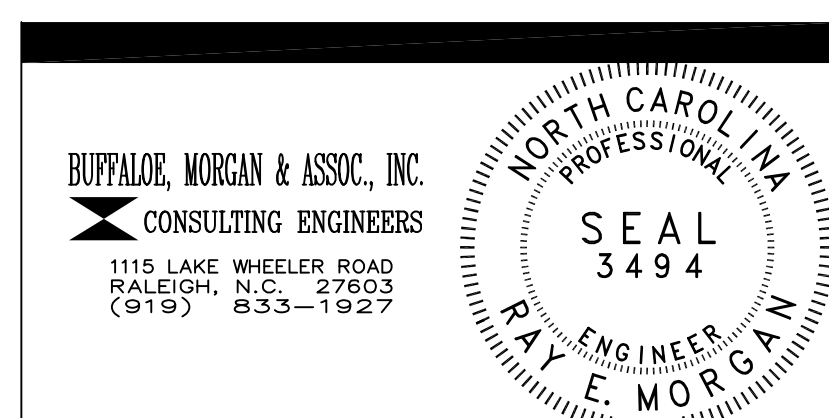
H8 06 A.H.U. #3  
SECTION  
SCALE: 1/4" = 1'-0"



H8 08 MIXING TANK FOR GLYCOL SYSTEM  
DETAIL  
NO SCALE



H8 07 GUY WIRE ROOF ANCHOR  
DETAIL  
NO SCALE



DRAWING REVISIONS:		
NO.	DATE	REMARKS

DATE: 16 MAY, 1994  
PROJECT#: 9305  
DESIGNED BY: DRD  
DRAWN BY: REM  
CHECKED BY: .